

# CONTAINER SPECIFICATIONS

Note: Average specifications are provided as an indication only. Variations can be found between shipping lines, series and makes.



## 20' DRY CONTAINER

<b>L20' x W8' x H8.6'</b>	<b>20 GP</b>
Interior Dimensions	L5.90 x W2.35 x H2.39 m
Door Opening Dimensions	W2.34 x H2.28 m
Nominal Capacity	33.2 cbm
Average Tare	2,280 kg
Payload	28,000 kg



## 20' REEFER CONTAINER

<b>L20' x W8' x H8.6'</b>	<b>20 RE</b>
Interior Dimensions	L5.46 x W2.29 x H2.28 m
Door Opening Dimensions	W2.29 x H2.26 m
Nominal Capacity	28.63 cbm
Average Tare	3,190 kg
Payload	27,000 kg



## 40' DRY CONTAINER

<b>L40' x W8' x H8.6'</b>	<b>40 GP</b>
Interior Dimensions	L12.02 x W2.35 x H2.39 m
Door Opening Dimensions	W2.34 x H2.28 m
Nominal Capacity	67.7 cbm
Average Tare	3,830 kg
Payload	26,000 kg



## 40' REEFER CONTAINER

<b>L40' x W8' x H8.6'</b>	<b>40 RE</b>
Interior Dimensions	L11.55 x W2.28 x H2.25 m
Door Opening Dimensions	W2.29 x H2.26 m
Nominal Capacity	59.3 cbm
Average Tare	4,760 kg
Payload	25,500 kg



## 40' DRY HIGH CUBE CONTAINER

<b>L40' x W8' x H9.6'</b>	<b>40 HC</b>
Interior Dimensions	L12.03 x W2.35 x H2.70 m
Door Opening Dimensions	W2.34 x H2.56 m
Nominal Capacity	76.3 cbm
Average Tare	3,980 kg
Payload	26,000 kg



## 40' REEFER HIGH CUBE CONTAINER

<b>L40' x W8' x H9.6'</b>	<b>40 RH</b>
Interior Dimensions	L11.55 x W2.28 x H2.54 m
Door Opening Dimensions	W2.29 x H2.56 m
Nominal Capacity	67.19 cbm
Average Tare	4,760 kg
Payload	25,000 kg

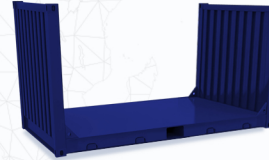
# CONTAINER SPECIFICATIONS

Note: Average specifications are provided as an indication only. Variations can be found between shipping lines, series and makes.



## 20' OPEN TOP CONTAINER

<b>L20' x W8' x H8.6'</b>	<b>20 OT</b>
Interior Dimensions	L5.90 x W2.35 x H2.35 m
Door Opening Dimensions	W2.34 x H2.28 m
Roof Aperture Dimensions	L5.67 x W 2.23 m
Nominal Capacity	32.7 cbm
Average Tare	2,260 kg
Payload	28,000 kg



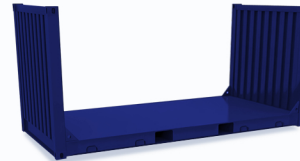
## 20' FLAT RACK CONTAINER

<b>L20' x W8' x H8.6'</b>	<b>20 FR</b>
Interior Dimensions	L5.62 x W2.44 x H2.21 m
Average Tare	3,000 kg
Payload	30,000 kg



## 40' OPEN TOP CONTAINER

<b>L40' x W8' x H8.6'</b>	<b>40 OT</b>
Interior Dimensions	L12.03 x W2.35 x H2.35 m
Door Opening Dimensions	W2.34 x H2.28 m
Top Opening Dimensions	L11.79 x W2.23 m
Nominal Capacity	66.7 cbm
Average Tare	3,980 kg
Payload	28,000 kg



## 40' FLAT RACK CONTAINER

<b>L40' x W8' x H8.6'</b>	<b>40 FR</b>
Interior Dimensions	L11.65 x W2.44 x H1.96 m
Average Tare	5,400 kg
Payload	30,000 kg