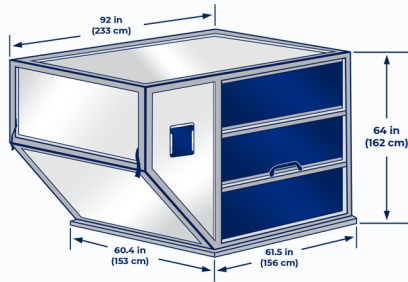


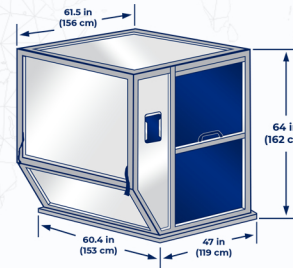
ULD SPECIFICATIONS

NOTE: Average specifications are provided as an indication only.
Variations can be found between Air lines, series and makes.



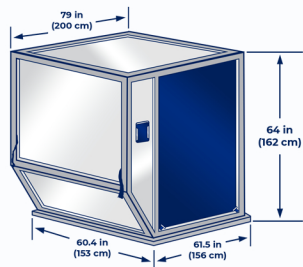
LD-1

IATA ULD Code: AKC Contoured Container
Also known as: AVC, AVD, AVK, AVJ
Forkable: AVY
Classification: LD-1
Rate Class: Type 8
Suitable for: B747, B767, B777, MD-11
Internal volume: 4.8 cu. m (169.5 cu. ft)
Maximum gross weight: 1588 kg (3501 lb)



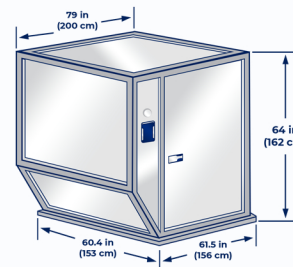
LD-2

IATA ULD Code: DPE Contoured Container
Also known as: APA, DPA
Forkable: DPN
Classification: LD-2
Rate Class: Type 8D
Suitable for: B767
Internal volume: 3.4 cu.m (120 cu. ft)
Maximum gross weight: 1225 kg (2700 lb)



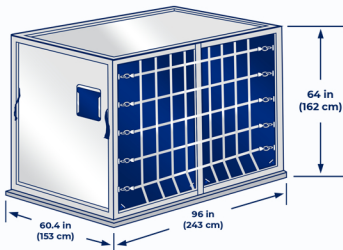
LD-3

IATA ULD Code: AKE Contoured Container
Also known as: AKE, AVA, AVB, AVC, AVK, DVA, DVE, DVP, XKS, XKG
Forkable: AKN, AVN, DKN, DVN, XKN
Classification: LD-3
Rate Class: Type 8
Suitable for: A300, A310, A330, A340, B747, B767, B777, DC-10, MD-11, L1011
Internal volume: 4.3 cu. m (152 cu. ft)
Maximum gross weight: 1588 kg (3500 lb)



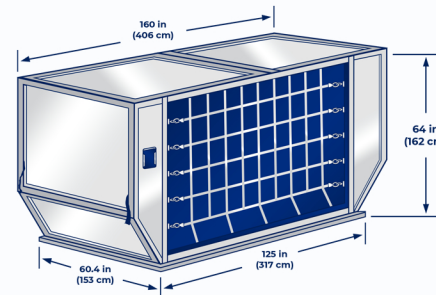
LD-3 REEFER

IATA ULD Code: RKN
Classification: LD-3
Rate Class: Type 8
Suitable for: A300, A310, A330, A340, B747, B767, B777, DC-10, MD11, L1011
Internal volume: 3.0 cu.m (109 cu. ft)
Maximum gross weight: 1588 kg (3500 lb)
Temperature Control Range: -20C to +20C



LD-4

IATA ULD Code: ALP Rectangular Container
Also known as: ALD, AWD, AWZ, DLP
Forkable: ALB, ALC, AWB, AWC
Classification: LD-4
Rate Class: Type 8
Suitable for: B767, B777
Internal volume: 5.7cu. m (201 cu. ft)
Maximum gross weight: 2449 kg (5399 lb)

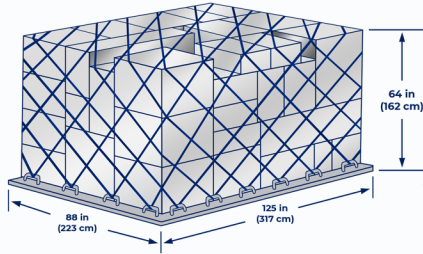


LD-6

IATA ULD Code: ALF Contoured Container
Also known as: AWD, AWF
Forkable: AWC
Classification: LD-6
Rate Class: Type 6W
Suitable for: A300, A310, A330, A340, B747, B777, DC-10, MD-11, L1011
Internal volume: 8.9 cu. m (314 cu. ft)
Maximum gross weight: 3175 kg (7000 lb)

ULD SPECIFICATIONS

NOTE: Average specifications are provided as an indication only.
Variations can be found between Air lines, series and makes.



LD-7

IATA ULD Code: P1P flat pallet with net

Also known as: PAA, PAG, PAJ, PAP, PAX, P1A, P1C, P1D, and P1G

Classification: LD-7

Rate Class: Type 5

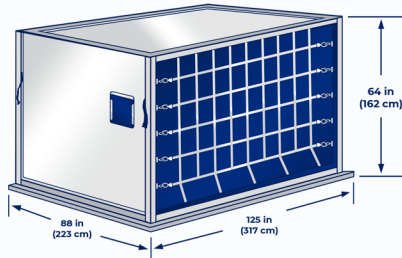
Suitable for:

Widebody: All aircraft

Standard-body: 707F, 727F, 737F, 757F, DC8F, DC9F

Internal Volume: 10.7 m³ (379 ft³)

Maximum Gross Weight: 4626 kg (10,198 lb)



LD-9

IATA ULD Code: AAP Enclosed Pallet on P1P base

Also known as: AA2, XAG, XAV

Classification: LD-9

Rate Class: Type 5

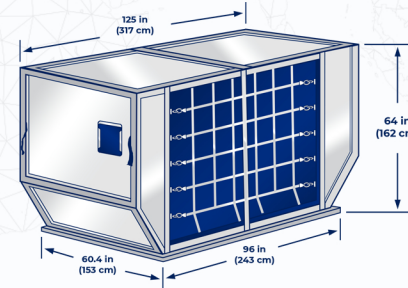
Suitable for: A300, A310, A330, A340, B747, B767, DC-10, MD-11, L1011

Internal volume: 9.1 cu. m (321 cu. ft)

Maximum gross weight:

4624 kg (10194 lb) lower deck

6000 kg (13227 lb) main deck



LD-8

IATA ULD Code: DQF

Also known as: ALE, ALN, DLE, DLF, DQP, MQP

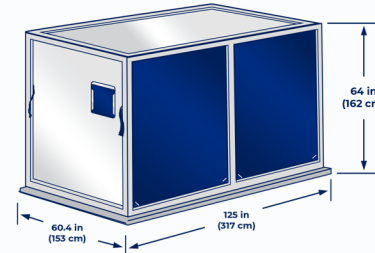
Classification: LD-8

Rate Class: Type 6A

Suitable for: B767

Internal volume: 6.85 cu. m (242 cu. ft)

Maximum gross weight: 2450 kg (5401 lb)



LD-11

IATA ULD Code: ALP Rectangular Container

Also known as: ALD, AW2, AWB, AWD, AWZ, DLP, DWB, MWB

Refrigerated version: RWB, RWD, RWZ

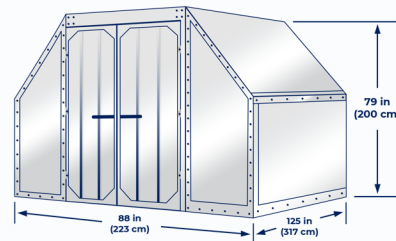
Classification: LD-11

Rate Class: Type 6

Suitable for: A300, A310, A330, A340, B747, B777, DC-10, MD-11, L1011

Internal volume: 7.2 cu. m (253 cu. ft)

Maximum gross weight: 3176 kg (7002 lb)



A-2

IATA ULD Code: DAA

Classification: A-2

Suitable for: B747, B747F, DC8, DC10, A300/F

Internal volume: 12.6 cu. m (444 cu. ft)

Maximum gross weight: 6033 kg (13300 lb)